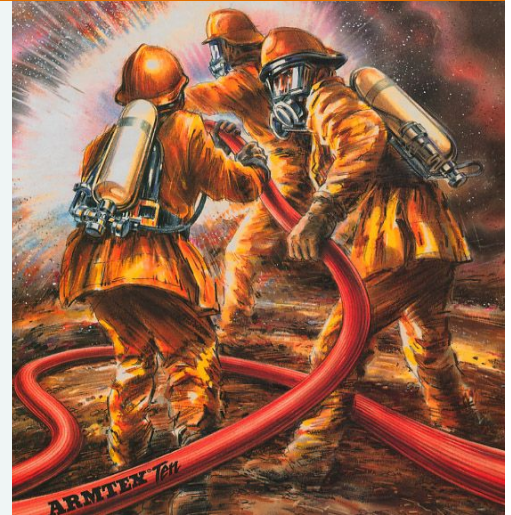


ARMTEX TEN

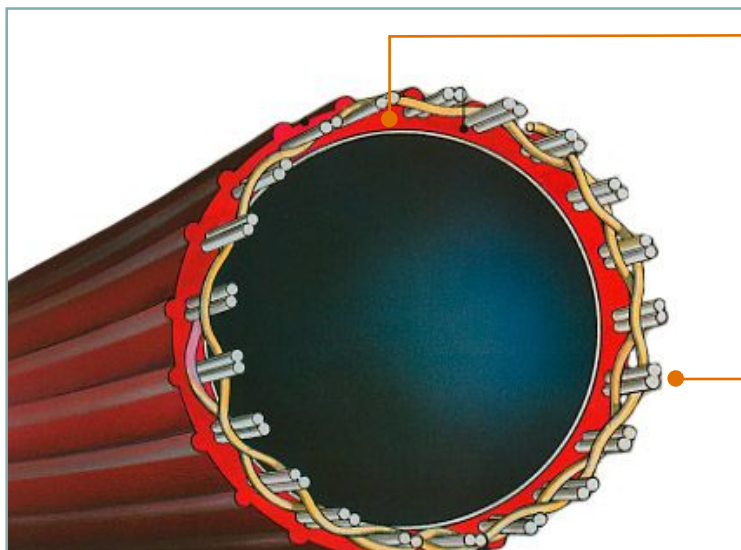
ARMTEX TEN is the result of over thirty years in design and manufacture of the ARMTEX fire fighting hose. The most up to date technology has permitted the incorporation of the advantages of new materials with manufacturing process improvements for a highly featured hose.

The results make the new ARMTEX TEN a fire fighting hose which combines the greatest effectiveness with optimum safety in the fight against fires.



SYNTHETIC COMPOUND

Made of specially formulated nitrile rubber to provide the hose with the greatest resistance to abrasion, high temperatures, attack by chemicals and aging



INNER WALL

Smooth, reducing the coefficient of friction for the passage of water.

Its composition is prepared to resist without problems the chemical additives which are ever more frequently added to the water to improve its effectiveness in the fight against fires.

TEXTILE REINFORCEMENT

Manufactured with high tenacity synthetic fibres. Since they are woven on modern circular looms, the fibres are free of stresses, achieving maximum product quality and duration.



RELIABLE

ARMTEX TEN is a high quality hose.

Design, materials and the manufacturing process are thought through to offer a reliable hose which delivers the maximum fire fighting safety.

ARMTEX TEN is constructed in accordance with the majority of current international standards.

SAFE

ARMTEX TEN's effectiveness is seen both in the ease of its rolling up, transport and deployment and in its exceptional adaptation to any fire fighting situation. The textile fibre integrated in its design and the characteristics of the materials employed allow ensuring a better radius of curvature and high flow rate with the lowest pressure loss.

ARMTEX TEN is very appropriate for reduced spaces and high buildings.

EFFECTIVE

ARMTEX TEN is designed to guarantee a long safe and effective service life with minimum maintenance.

ARMTEX TEN preserves its high resistance to pressure, chemicals, abrasion, high temperatures and aging throughout its long lifetime.

TECHNICAL DATA

Diámetro		Max. Weight		20 m roll diameter		Normal Working Pressure		Max. Working Pressure	
mm	inch	g/m	lb/100ft	cm	inch	Kg/cm ²	psi	Kg/cm ²	psi
25	1	230	16	42	19	30	450	40	550
38	1 1/2	290	20	38	17	10	150	17	240
45	1 3/4	350	24	38	17	10	150	17	240
52	2	420	28	38	17	10	150	17	240
65	2 1/2	550	37	39	18	10	150	17	240
70	2 3/4	600	41	39	18	10	150	17	240
76	3	670	45	39	18	10	150	17	240
110	-	1080	73	40	18,5	8	110	14	200

HARD WEARING

ARMTEX TEN is underwritten by 30 years of experience and by rigorous quality control which allow us to guarantee it against any manufacturing or material defects.

QUALITY GUARANTEE